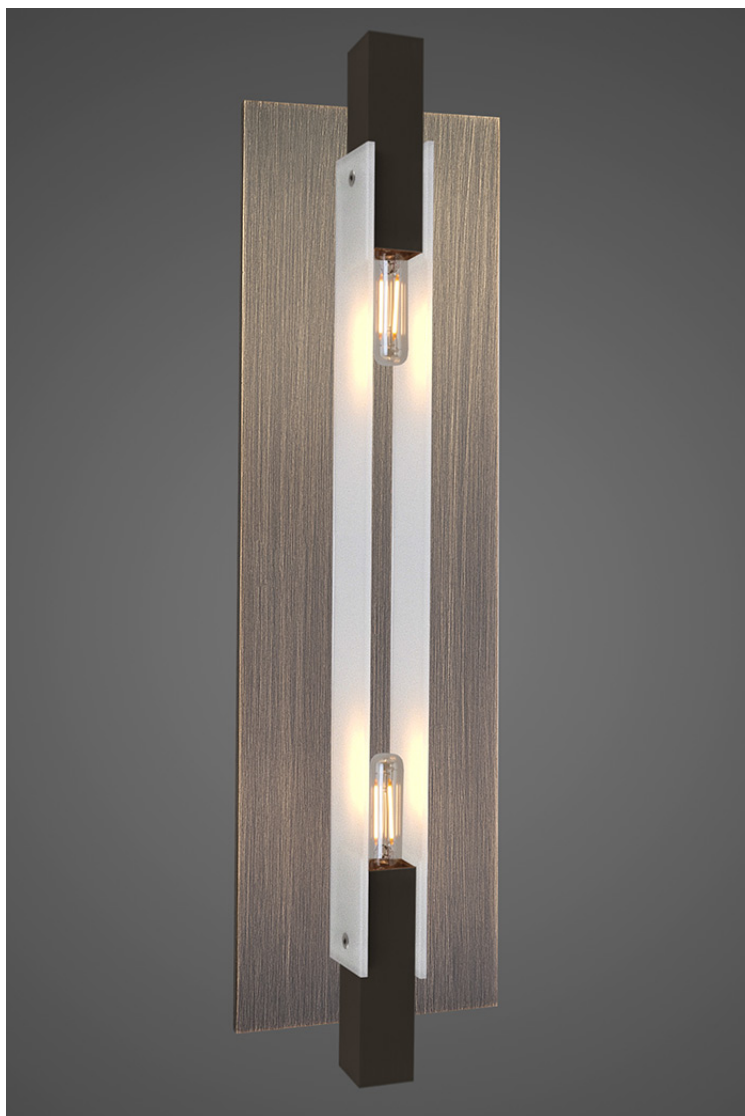


ORESTES SUAREZ
LIGHTING



ANDO SCONCE - #90S-A

Double Bulb Sconce

Material: Aluminum | Low Iron Tempered Glass | Brass

Finish Rectangular Tube: Bronze Brown Powder Coat Standard

Finishes Stems: Clear Low Iron Tempered Glass, Etched Low Iron Tempered Glass, Satin Brass with Clear Coat

Finishes Backplate: Satin Brass or Antique Satin Brass with Clear Coat, Bronze Brown Powder Coat

Size A Sconce: 4" width x 17" overall height x 3.5" depth

Includes 4" universal mount plate (J-Box Centered)

Double Bulb Version can be mounted Horizontally or Vertically

(2 x 25 Watt T6 Tubular Incandescent or LED Bulb (LED Included) Maximum - E12 Socket)